

DOWNTOWN NAPA OFFICE SPACE

1700 Second Street, Napa CA 94559



FOR

LEASE

OFFICE SPACE FOR LEASE IN DOWNTOWN NAPA

PROPERTY HIGHLIGHTS

- ◆ ± 8,203 SF space available at Robert Louis Stevenson Plaza
- ◆ Professional office building
- ◆ Tenant Improvement Allowance Available
- ◆ Zoned Downtown Commercial (CD)
- ◆ Abundant Reserved Parking

LOCATION

Prime location on Second Street at Seminary Street in Downtown Napa. Nearby Napa County Court House and Administration of-fices, restaurants and retail. Walking distance to Napa Wine Train, Oxbow district.

SUITES AVAILABLE

- Suite 231:* ± 4,790 SF Second Floor
Suite 266: ± 1,370 SF Second Floor
Suite 288: ± 293 SF Second Floor Single office
Suite 314: ± 452 SF Single office with reception area. Great view.
Suite 327: ± 1,298 SF Third floor space formerly a Dental Office

For more information, please contact exclusive listing agents:

Michael Holcomb

DRE# : 01458995

707.226.2661 x203

mholcomb@stronghayden.com

Matt Connolly

DRE# : 01164569

707.226.2661 x201

mconnolly@stronghayden.com

Offered For Lease at **\$2.00/SF/Month Full Service**

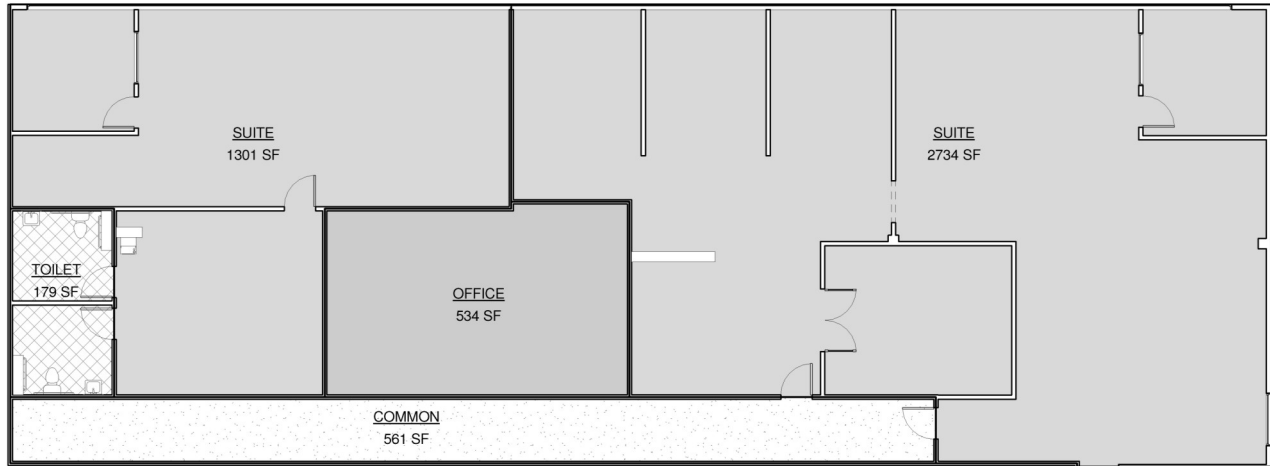
STRONG & HAYDEN
COMMERCIAL REAL ESTATE

Phone: 707.226.2661 • Fax: 707.226.2339 • 433 Soscol Ave, Ste. A130 • Napa, CA 94559 • www.stronghayden.com

All information contained herein has been obtained from sources deemed reliable. However, no warranty or guarantee is made as to the accuracy of the information. It is our intention that all qualified applicants be given equal opportunity. We do not discriminate on the basis of race, religion, national origin, color, sex, sexual preference, age, veteran status, or disability.

DOWNTOWN NAPA OFFICE SPACE

1700 Second Street, Napa, CA 94559



Rentable Area Legend

-  COMMON
-  OFFICE
-  SUITE
-  TOILET

② Level 2 SUITE SPACE
1/8" = 1'-0"

Second Floor



STRONG & HAYDEN
COMMERCIAL REAL ESTATE

Phone: 707.226.2661 • Fax: 707.226.2339 • 433 Soscol Ave, Ste. A130 • Napa, CA 94559 • www.stronghayden.com

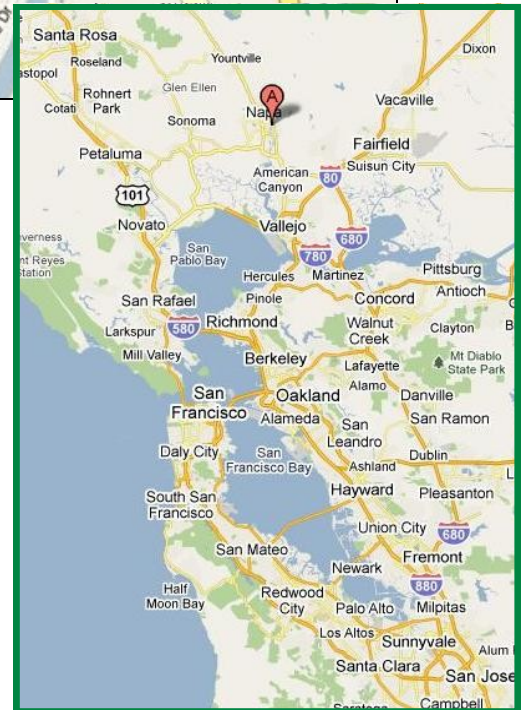
All information contained herein has been obtained from sources deemed reliable. However, no warranty or guarantee is made as to the accuracy of the information. It is our intention that all qualified applicants be given equal opportunity. We do not discriminate on the basis of race, religion, national origin, color, sex, sexual preference, age, veteran status, or disability.

DOWNTOWN NAPA OFFICE SPACE

1700 Second Street, Napa, CA 94559



Prime location in Napa with easy access from Highways 121 & 29



San Francisco Bay Area Map

STRONG & HAYDEN
COMMERCIAL REAL ESTATE

Phone: 707.226.2661 • Fax: 707.226.2339 • 433 Soscol Ave, Ste. A130 • Napa, CA 94559 • www.stronghayden.com

All information contained herein has been obtained from sources deemed reliable. However, no warranty or guarantee is made as to the accuracy of the information. It is our intention that all qualified applicants be given equal opportunity. We do not discriminate on the basis of race, religion, national origin, color, sex, sexual preference, age, veteran status, or disability.